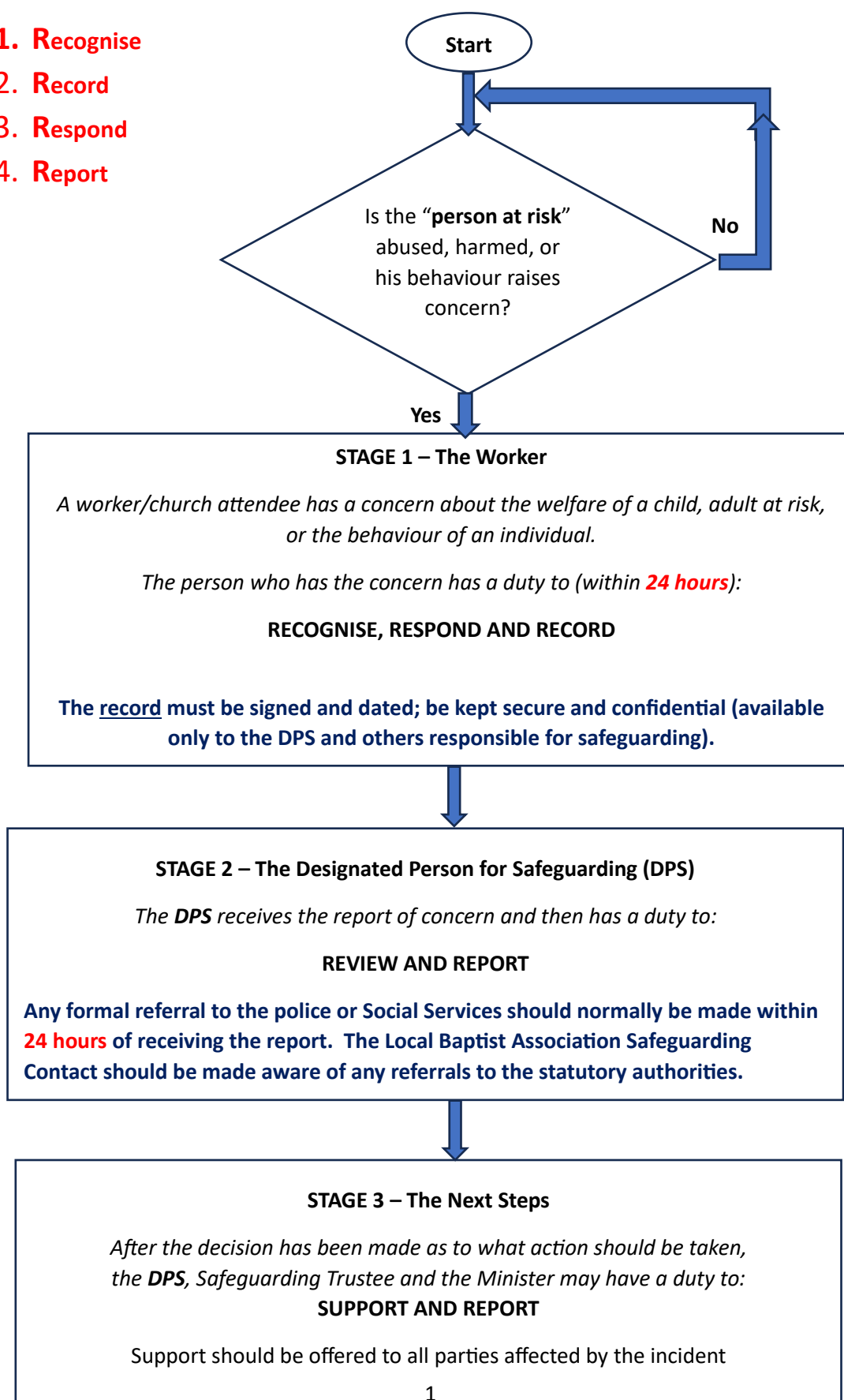


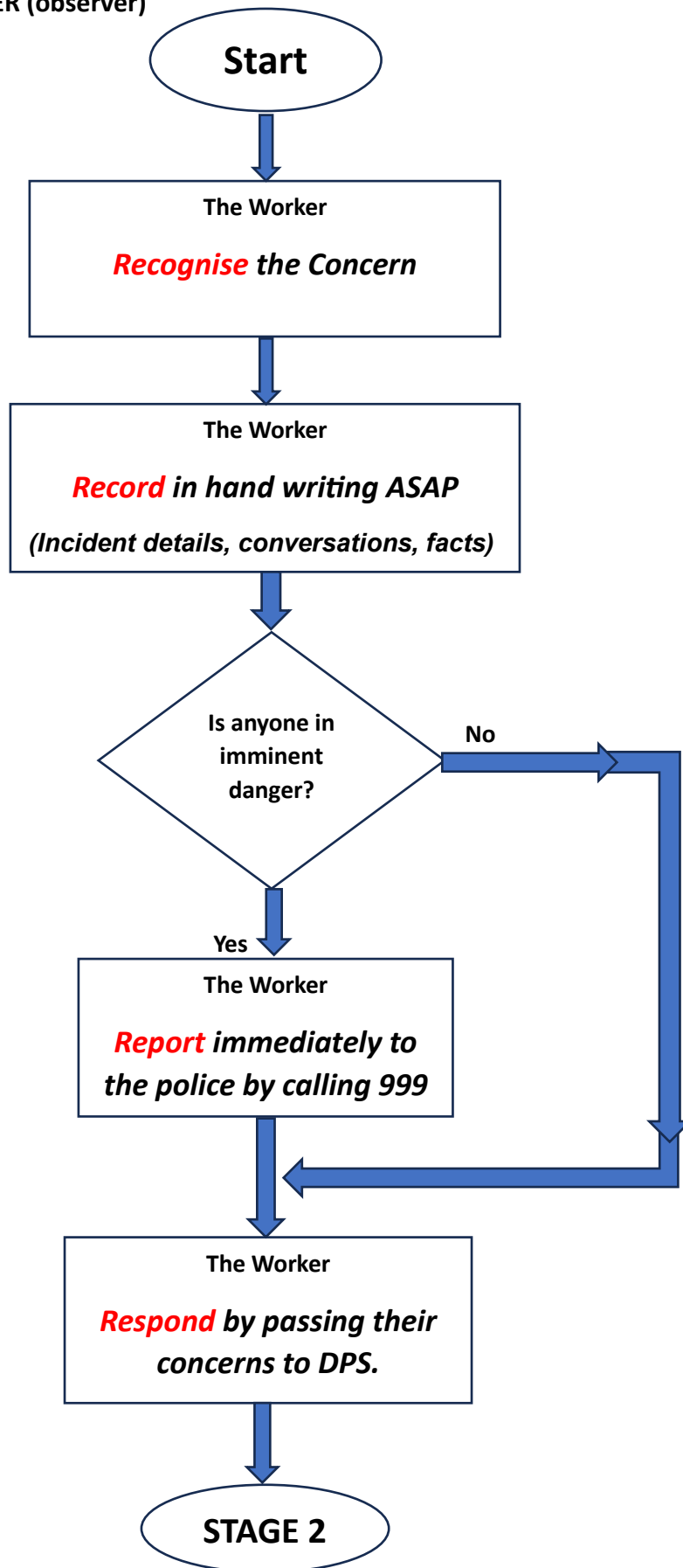
Procedure for Recognizing, Responding to, and Reporting Abuse

Everyone has their part to play in helping to safeguard children and adults at risk within the life of the church. Remember the **4 Rs**:

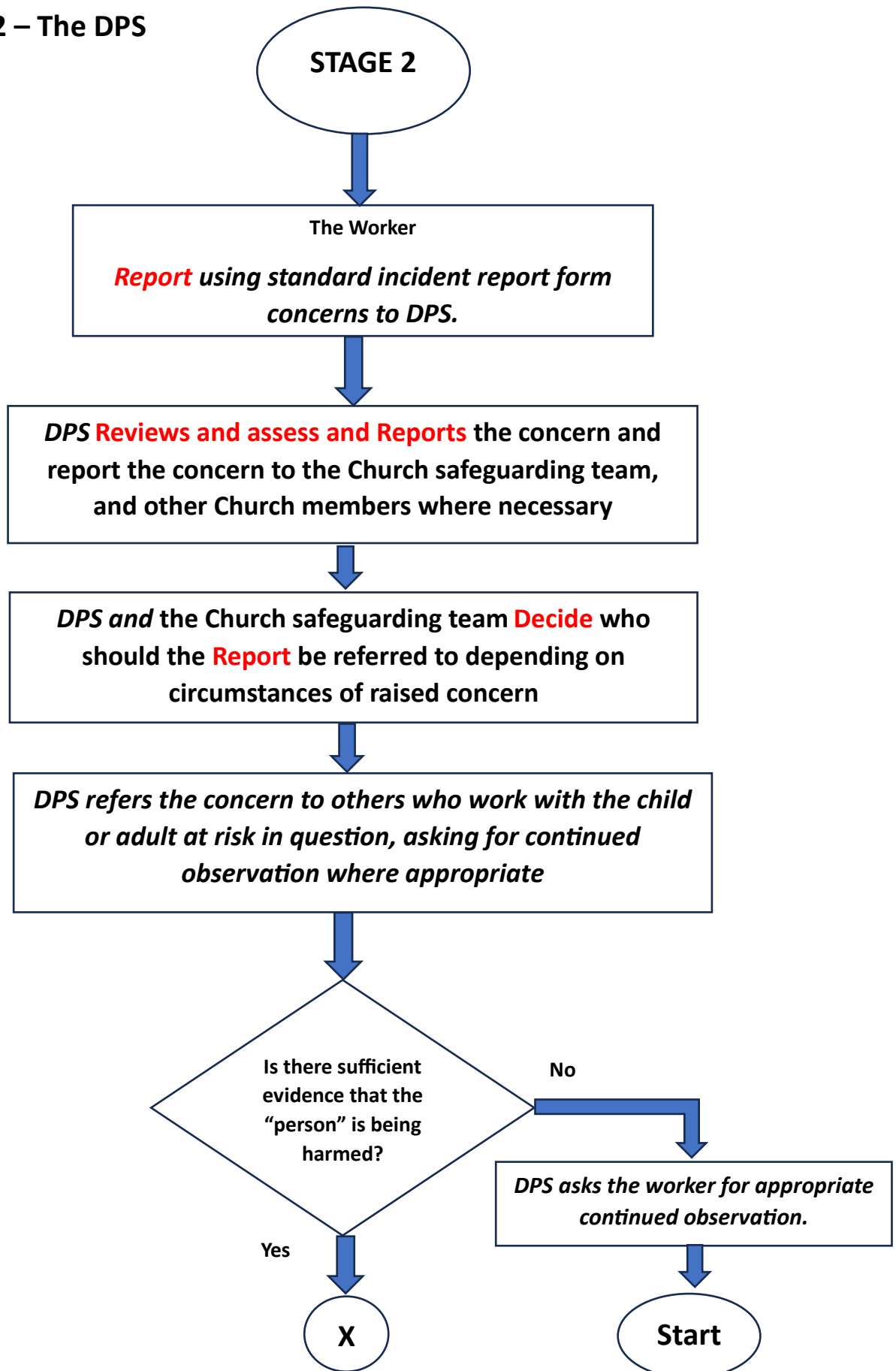
1. **Recognise**
2. **Record**
3. **Respond**
4. **Report**

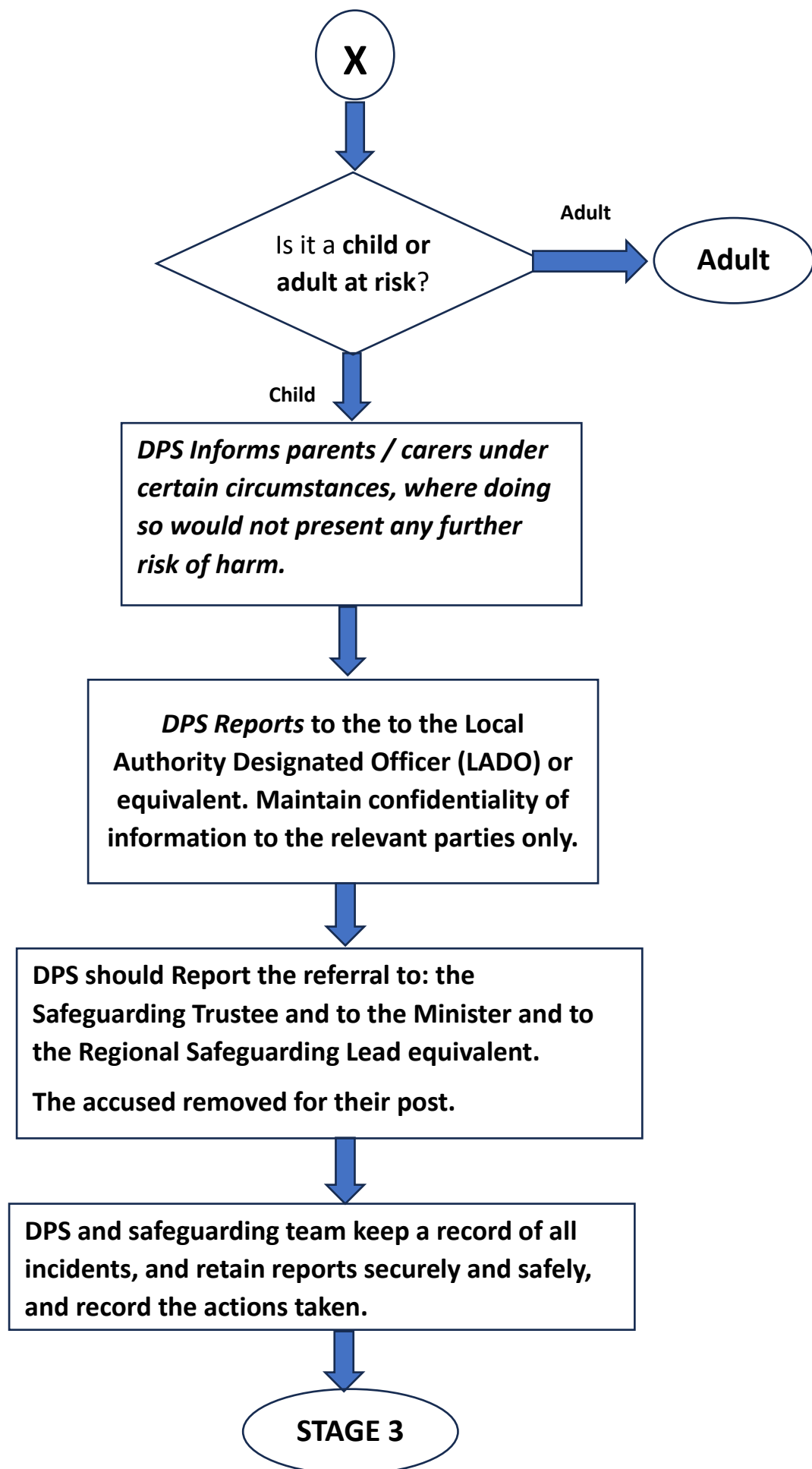


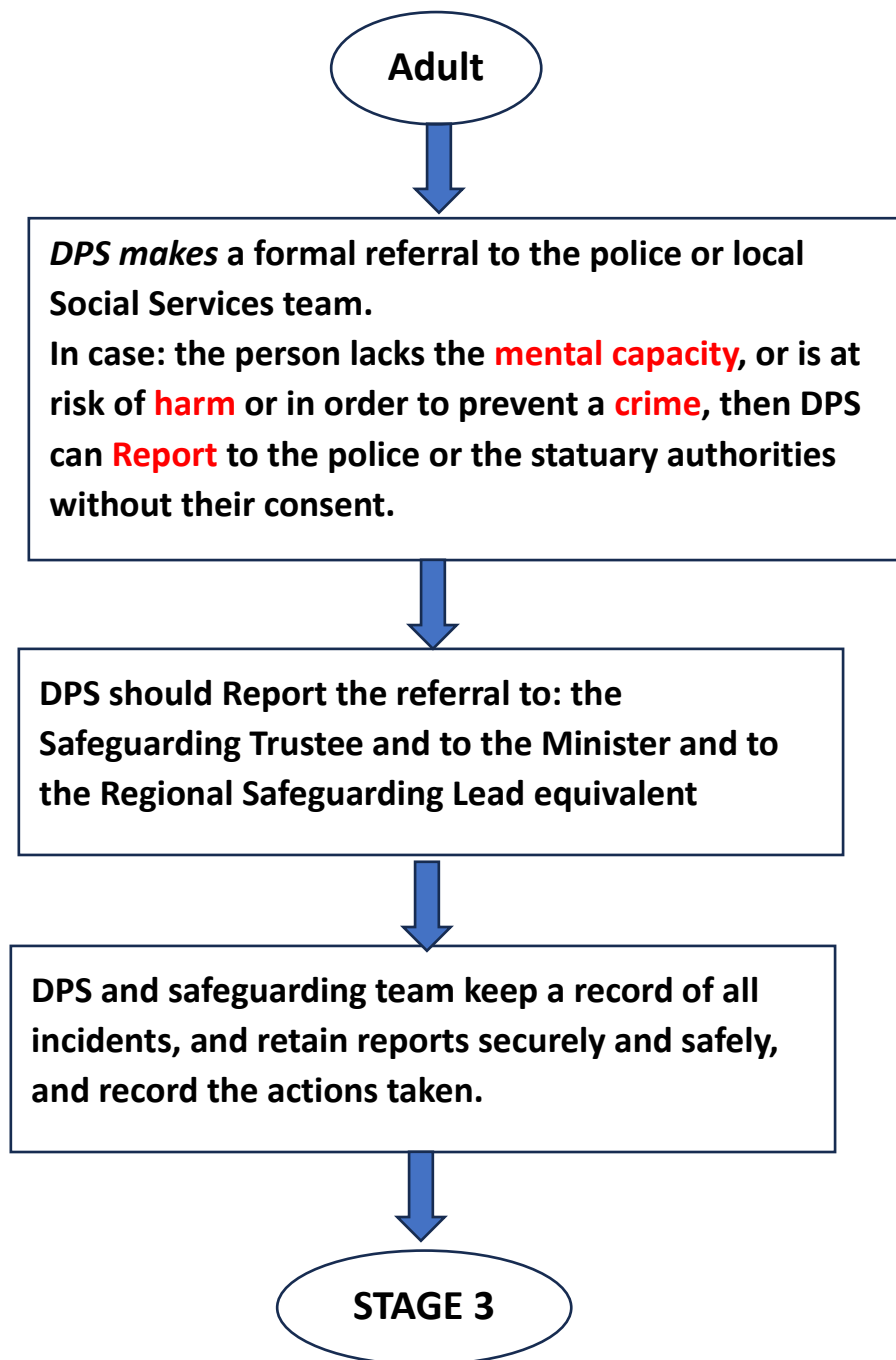
STAGE 1 – THE WORKER (observer)



STAGE 2 – The DPS







Responsibilities:

Report

Support

